

The Ashby



Some Optional Features May Be Shown

This 1,648 s.f. colonial design features three bedrooms and two and half baths.

Inside, you'll find a large great room. The kitchen features plenty of counter space and a large corner pantry. The adjacent dining area features a bay.

The master suite features a private bath with shower, garden tub & dual vanities as well as a roomy walk-in closet.

Two additional bedrooms are generously proportioned.

You'll enjoy the convenience of the first floor laundry room.

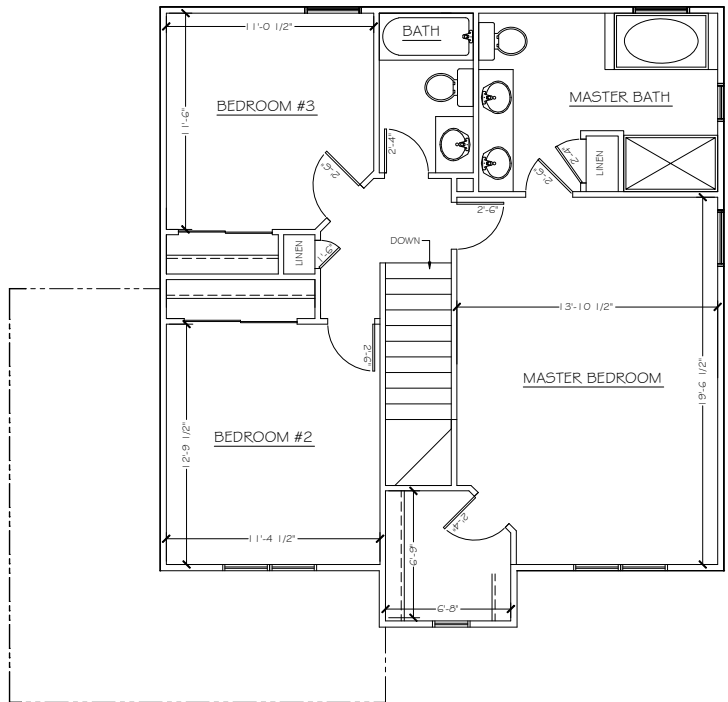
As with all ProBUILT plans, the Ashby is fully customizable to fit your specific needs. Slab foundation option available. We can modify this plan to include a 3 car garage, finished basement or create alternate elevations.

Contact us at (440) 255-6535 to learn more about this terrific design.

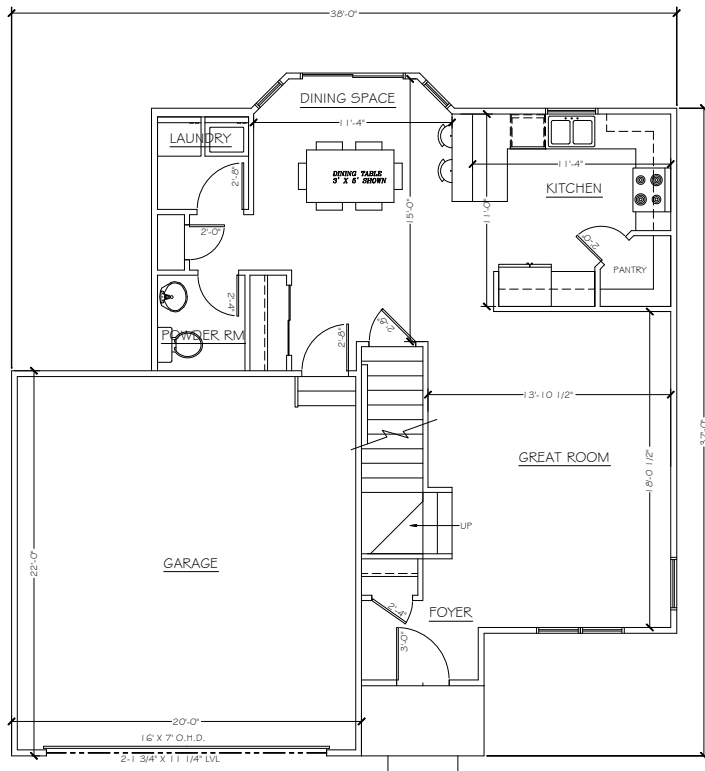


(440) 255-6535
www.probuilt-homes.com

Ashby
1,648 Square Feet



SECOND FLOOR PLAN
878 SQ FT



FIRST FLOOR PLAN
770 SQ FT



Proud Builder of the 2006-2008
YMCA Dream House



ProBuilt Homes, Inc.
PO Box 384

Mentor, Ohio 44061

Tel: (440) 255-6535

Fax: (440) 974-8360

Email: sales@probuilt-homes.com

www.probuilt-homes.com

This home plan is the exclusive copyright of ProBuilt Homes. Reproduction of this plan, either in whole or in part, including any form of copying or derivative works therefrom, is strictly prohibited. This rendering and floor plan are for illustrative purposes only and are not intended to be part of any purchase agreement or construction contract. Some optional features may be shown. In the interest of continued product improvement and the challenge of material availability, builder reserves the right to modify plans, specifications and standard features without notice. Copyright 2006 ProBuilt Homes Inc. all rights reserved. Rev: 021209